

CUSTOMER 客户		MODEL NO 公司型号	CP-15V-2A-001
MANUFACTURER 承制方	<b>SHENZHEN CERRO POWER COMPANY LTD</b>	EDITION 版本	A

# CP-15V-2A CHARGER SPECIFICATION

## CONTENTS

1.描述: SCOPE .....	2
2.输入特性: INPUT CHARACTERISTICS.....	2
3.输出特性: OUTPUT CHARACTERISTICS .....	3-4
4.保护功能: PROTECTION REQUIREMENT .....	4-5
5.环境条件: ENVIRONMENTAL REQUIREMET .....	5-6
6.EMI 安全要求: SAFETY AND EMI REQUIREMENT.....	6
7.机械要求: MECHANICAL REQUIREMENT .....	7
8.外形尺寸: OUTLINE DIMENSION .....	7
9.铭牌附图: Label .....	7
10: 包括: PACKING DETAILS.....	8

DESIGN/ 拟制 :  
Huanggaohua

Mr. CHECK/审核: Mr. Luokai

APPROVAL/批准: Leslie

CUSTOMER 客户		MODEL NO 公司型号	CP-15V-2A-001
MANUFACTURER 承制方	SHENZHEN CERRO POWER COMPANY LTD	EDITION 版本	A

## 1.描述 (SCOPE):

本规格书适应于 **CP-15V-2A-001** 型号的开关电源充电器。

The purpose of the document is to specify the functional requirements of a 30W switching power supply Charger.

## 2.输入特性 (INPUT CHARACTERISTICS):

### 2.1 输入电压 (Input Voltage):

额定电压 (Nominal Voltage): 100-240VAC

调整范围 (Variation Range): 90-264AC

### 2.2 输入频率 (Input Frequency) :

额定频率 (Nominal Frequency) : 50/60Hz

调整频率 (Variation Frequency): 47/63Hz

### 2.3 输入电流(Input Current):

当输入交流电压为额定值的下限电压负载满载时, 最大输入交流电流 0.75A

0.75A are max At any input voltage and rated. DC output rated load.

### 2.4 浪涌电流 (Inrush Current) :

当输出为额定负载, 环境温度为 25℃, 输入 240Vac 冷态起机时的最大浪涌电流小于为 50A。

50 Amps Max. Cold start at 240Vac input, with rated load and 25℃ ambient.

### 2.5 AC 漏电流 (Ac Leakage Current) :

当输入电压 240Vac 时, 最大漏电流为 1mA.

1 mA Max. At 240Vac input on Leakage current.

CUSTOMER 客户		MODEL NO 公司型号	CP-15V-2A-001
MANUFACTURER 承制方	SHENZHEN CERRO POWER COMPANY LTD	EDITION 版本	A

### 3.输出特性:

#### OUTPUT CHARACTERISTICS:

##### 3.1 输出功率 (Power Output) ;

电压            最小负载        每路最大负载            输出总功率

Voltage        Min. Load        Max. Load            Output Power

+ 15.0Vdc        0 A                2.0A                    30.0W

##### 3.2 负载特性/调整率 (Combined Load/Line Regulation) :

电压    最小负载        最大负载        负载调整                    空载输出电压

Voltage    Min. Load    Max. Load    Load Regulation                    No load

+ 15.0Vdc    0A                2.0A                14.25V-15.75V                14.25v-15.75V

##### 3.3 空载待机功耗: (UNLOAD STANDBY POWER)

MAX: 0.5W; Normal : Less than 0.5W

##### 3.4 波纹和噪音 (Ripple And Noise) :

测试条件: 接上电池正常充电下, 使用示波器带宽为 20MHZ 连接到充电器的输出端, 同时输出端并连一个 47UF 的电解电容和一个 0.1UF 的瓷片电容。

The ripple and noise are as follows when measure with Max. Bandwidth of 20MHz and Parallel 47uF/0.1uF, crossed connected at testing point.

电压                    最大波纹最大噪音

Voltage                    Ripple And Noise(Max.)

+ 15.0 Vdc                    240mVp-p

CUSTOMER 客户		MODEL NO 公司型号	CP-15V-2A-001
MANUFACTURER 承制方	SHENZHEN CERRO POWER COMPANY LTD	EDITION 版本	A

### 3.5 启动延迟时间 (Turn On Delay Time) :

当输入 100Vac 和输出最大负载时, 最大启动时间为 2S,

2 second Max. At 100Vac input and output Max. Load. Efficiency: 82%.

### 3.5 上升时间 (Rise Time) :

当输入 100Vac 和输出最大负载时最大时间为 20ms

20mS Max. At 100Vac input and output Max. Load.

### 3.6 保持时间 (Hold Up Time) :

当输入 100Vac 和输出最大负载时, 最小保持时间为 10mS

10mS Min. At 100Vac input and output Max. Load.

### 3.8 过充 (Overshoot) :

在电源开启或关闭的时候, 最大 10%

10% Max. When power supply at turn on or turn off.

### 4. 保护功能 (PROTECTION REQUIREMENT) :

#### 4.1 短路电路保护:

Short Circuit Protection: 该电源充电器在短路解除时, 能正常工作恢复。

The power supply will be auto recovered when short circuit faults remove.

#### 4.2 过流保护 (Over current Protection) :过流故障除后, 电源将自动恢复正常工作。

The power supply will be auto recovered when over current faults remove.

CUSTOMER 客户		MODEL NO 公司型号	CP-15V-2A-001
MANUFACTURER 承制方	SHENZHEN CERRO POWER COMPANY LTD	EDITION 版本	A

5.环境要求(ENVIRONMENTAL REQUIREMET):

5.1 工作温度(Operating Temperature):

0°C-40°C，满载，正常工作(Full load, Normal operation)。

0°C to 40°C, Full load, Normal operation.

5.2 储藏温度(Storage Temperature): -20°C to 85°C

带外壳(With package)

5.3 工作湿度 (Relative Humidity) :

5% (0°C) ~90% (40°C)，72 小时，满载，正常工作。

5%(0°C)~90%(40°C)RH,72Hrs,Full load, Normal operating

5.4 跌落试验 (DROPPING (PACKED))

一个角，三个棱，六个面各一次.1M 高度

1 Corner, 3 Edges, 6 Surfaces one time for each surface above 1Meter Height.

5.5 振动(Vibration):

1.测试标准：国际电工电子委员会

Operating: IEC 721-3-3 3M3

5~9Hz,A=1.5mm

加速度 (9~200Hz,Acceleration 5m/s<sup>2</sup>)

CUSTOMER 客户		MODEL NO 公司型号	CP-15V-2A-001
MANUFACTURER 承制方	SHENZHEN CERRO POWER COMPANY LTD	EDITION 版本	A

6.安全及 EMC 要求(SAFETY AND EMC REQUIREMENT):

6.1 安全(Safety):

CE

6.2 高压(Dielectric Strength)(Hi-Pot):

初级对次级(Primary to secondary),3000Vac/10mA/1s.

6.30 要求通过雷击 1KV (Surge Immunity with 1KV voltage)

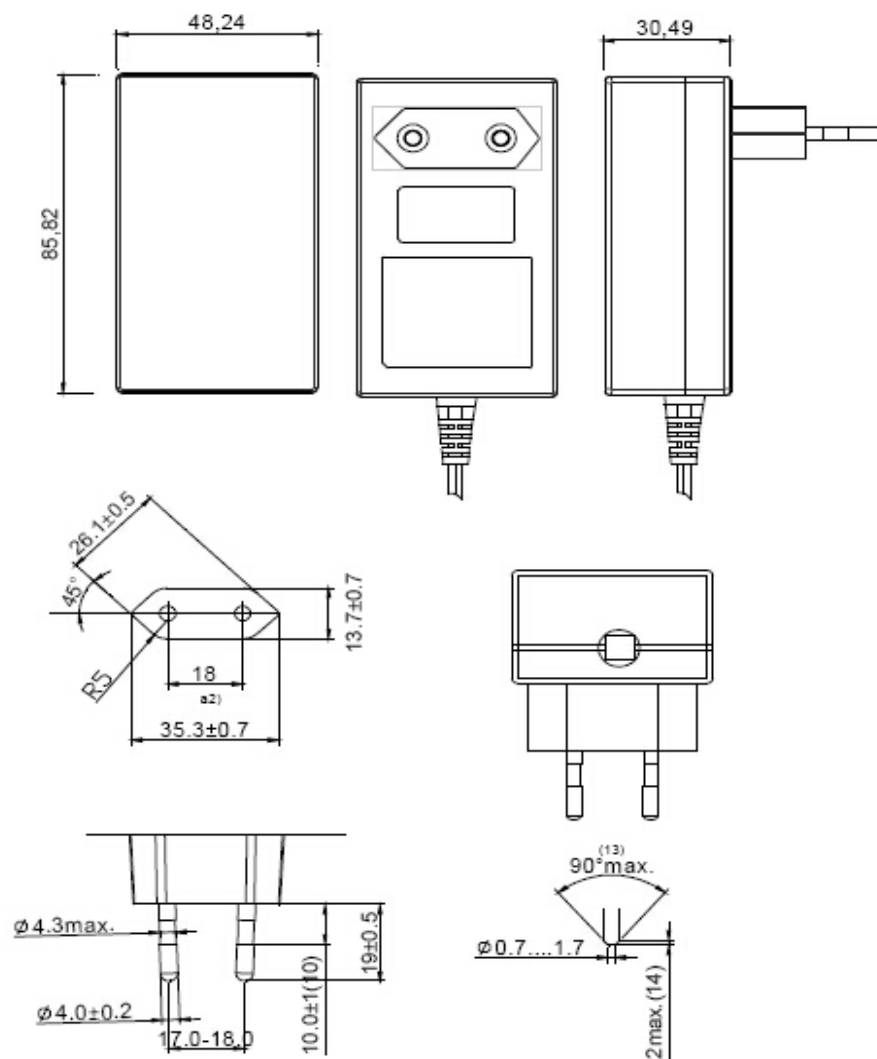
CUSTOMER 客户		MODEL NO 公司型号	CP-15V-2A-001
MANUFACTURER 承制方	SHENZHEN CERRO POWER COMPANY LTD	EDITION 版本	A

## 7. 结构参数(MECHANICAL REQUIREMENT):

7.1 外壳 (Enclosure) : PC: BLACK (lead free), 无铅 PC 料, 黑色

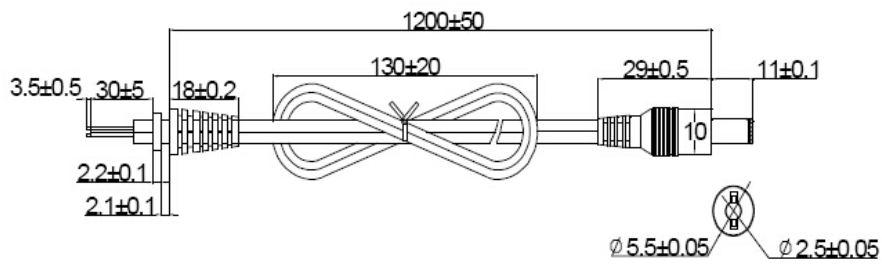
尺寸 SIZE: L: 86\*W: 48 H: 32MM (GS)

7.2 输入线 (Input Connector)



8.0 DC 线长： 总长 1.2M

DC cable: Length: 1.2M



**NOTE/注意:** (unit:mm)

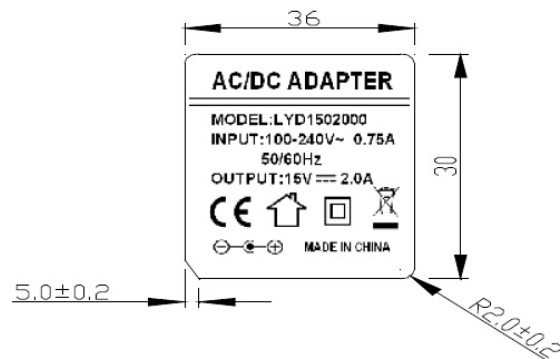
1. 2464 22AWG 80°C VW-1 300V.

线材: 2464 22#线

2. The polarity: inner-positive; outer-negative.

极性: 内正外负

9.0 铭牌: (LABEL)

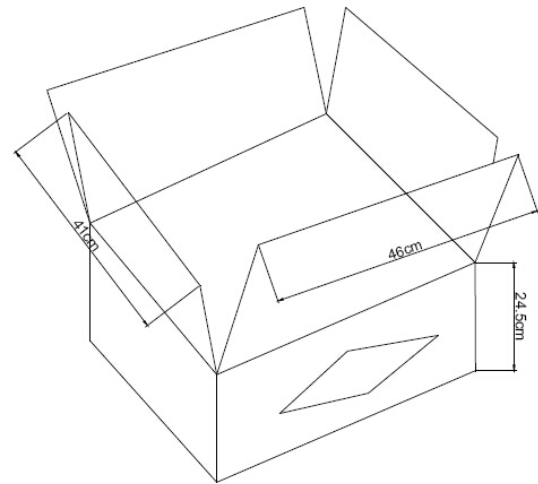
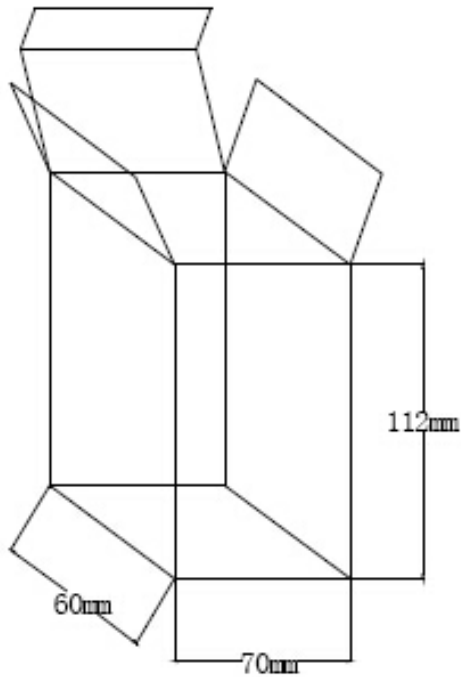


Note: 1. 材质/MATERIAL:PET

2. SILVER characters BLACK background/黑底银字



## 10.包装: PACKING DETAILS



外箱/Outside box

80pcs

## 11 注意事项 CAUTION

FOR INDOOR USE ONLY 限于室内使用

## 12 运输 贮存 (TRANSPORTATION AND STORAGE)

1. TRANSPORTATION: AIR SEA LAND WITH CAR SHIP OR PLANE , AND HANDLE WITH CARE。

2 STORAGE:  $-20^{\circ}\text{C}$  to  $60^{\circ}\text{C}$  on Humidity of 10%-95%, with storage with one year, After one year, need to inspection again.